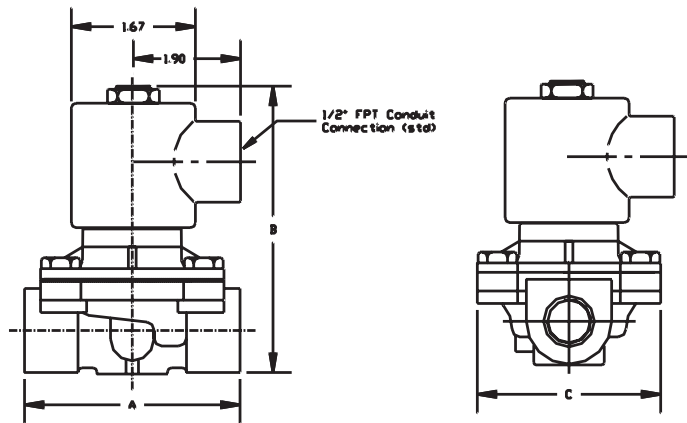


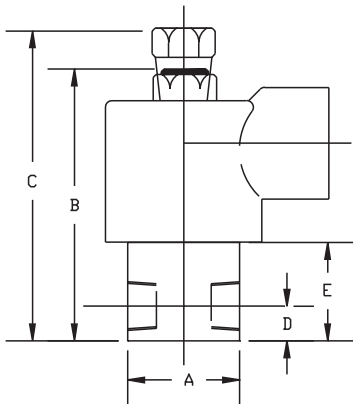
Port Size (in)	Orifice Size (in)	Flow Factor		Operating Pressure Differential Air / Gas / Water				Max. Operating Temp °F / °C	Coil (Watt)		Valve Series	Base Part Number	Solenoid Specifications			
		Cv	Kv	Min. PSI/Bar	AC	DC	AC		DC	Voltage			Enclosure / Termination			
					Max. (MOPD) PSI / Bar	Max. (MOPD) PSI / Bar										
Normally Open (Open When De-Energized) - NPT												AC	Series 11,21			
1/8	1/32	.019	.016	0	250	17.24	250	17.24	120	49	5	6	11	1102P-022OE-A2	05	
1/8	3/64	.046	.039	0	200	13.79	200	13.79	120	49	5	6	11	1102P-032OE-A2	24-50/60	CN
1/8	1/16	.080	.068	0	150	10.3	150	10.3	120	49	5	6	11	1102P-042OE-A2		Canister
3/8	5/8	2.3	1.96	4	150	10.3	100	6.90	180	82	5	6	21	2105X-402OA-A2	10	18" Leads
1/2	5/8	3.0	2.56	4	150	10.3	100	6.90	180	82	5	6	21	2106X-402OA-A2	110/50-	
3/4	3/4	4.1	3.50	4	150	10.3	100	6.90	180	82	5	6	21	2108X-482OA-A2	120/60	DC
3/8	5/8	3.3	2.81	0	140	9.66	90	6.21	180	82	10	10	181	18105X-402OA-F4		1/2" FPT
1/2	5/8	4.1	3.50	0	140	9.66	90	6.21	180	82	10	10	181	18106X-402OA-F4	23	24" Leads
3/4	3/4	5.5	4.69	0	140	9.66	90	6.21	180	82	10	10	181	18108X-482OA-F4	220/50-	
Normally Open (Open When De-Energized) - John Guest® Speedfit® Push-In Ports																
3/8	5/8	2.3	1.96	4	150	10.3	100	6.90	180	82	5	6	21	21J5X-402OA-A2	DC	Series I81
3/8	5/8	3.3	2.81	0	150	10.3	90	6.21	180	82	10	10	181	181J5X-402OA-F4	72	Din "B"
															12 VDC	D4
															75	NEMA IV/IVx
															24 VDC	24" Leads
																LK
																Din "A"

Wattage Rating / Power Consumption

AC				DC
Valve Series	Wattage	120 VAC 60 Hz		Wattage
		VA Inrush	VA Holding	
11, 21	5	.385	.200	6
I81	10	30	13	10



Dimensions (in inches)



Pipe Size	A	Series 21 Normally Closed B	Series 21 Normally Open B	Series I81 Normally Closed B	Series I81 Normally Open B	C	Series 21 Weight (lbs.)	Series I81 Weight (lbs.)
3/8	2.75	3.29	4.97	3.90	4.33	2.34	.80	.80
1/2	2.75	3.29	4.97	3.90	4.33	2.34	.80	.80
3/4	2.77	3.87	5.29	4.44	4.84	2.34	.84	.84

Pipe Size / Body Type	A	Normally Closed B	Normally Open C	D	E
1/8 Polypropylene	1.38	2.38	2.77	.33	.90
1/8 Brass, S/S	1.00	2.38	2.77	.25	.88